

Kristin



Kristin Auditorium
Venue Specifications





General Information

The Auditorium is a feature of the school. With *seating capacity for over 1,000*, it is an effective space for large-scale student productions, school presentations and assemblies. The facility includes state-of-the-art sound and lighting equipment, with two full time staff managing the busy Auditorium schedule.

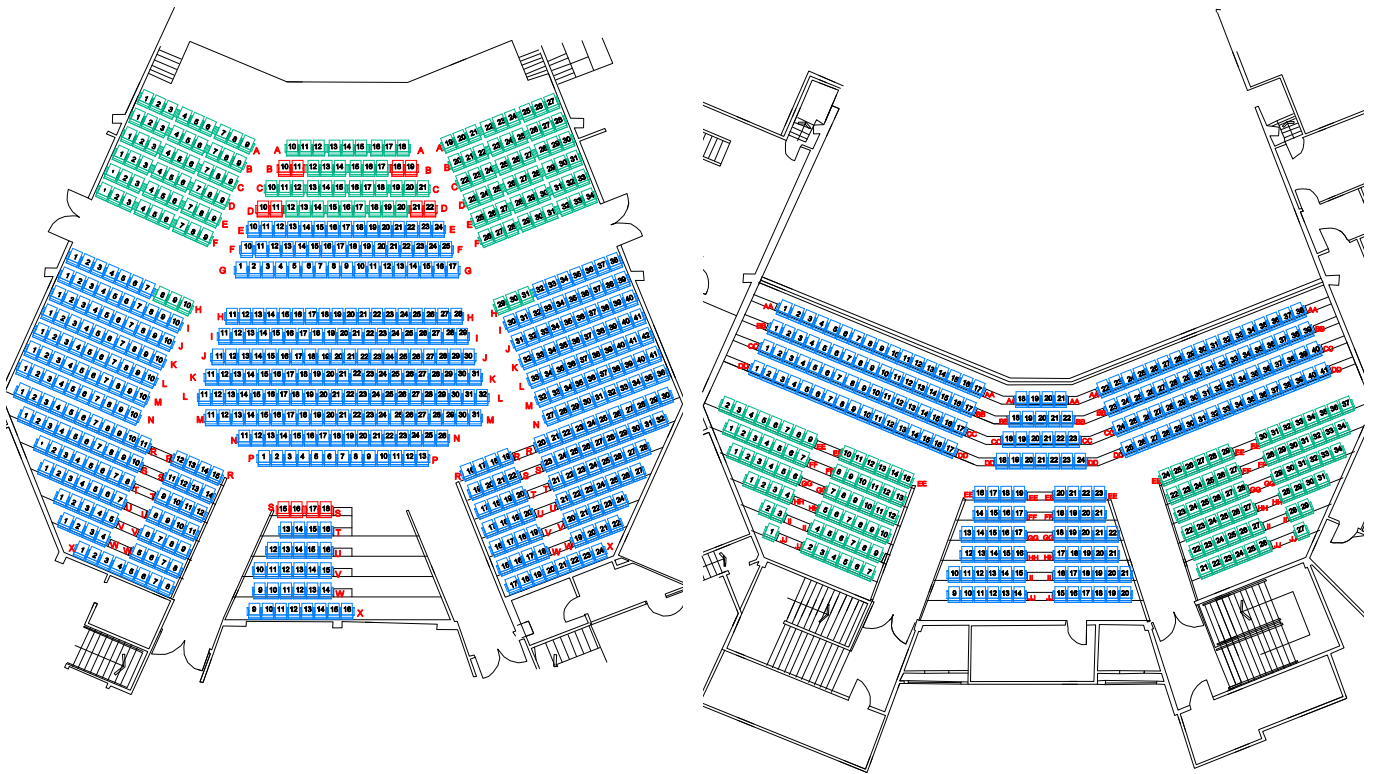
Physical address

360 Albany Highway, Albany
Gate 2 Best entrance for
Auditorium Carpark

Venue Bookings

Maggie Cross
Operations Manager
021 1209 350
mcross@kristin.school.nz

Seating



1023

Total Seating Capacity

996

Stalls Row A removed (standard)

Stalls Level All rows	677
Stalls Level Row A removed	650 (std)
Balcony Level	346
Accessibility Seating	4 The green and red seats in the downstairs layout (left plan) are all removable
Removeable seat for Wheelchairs	H8-10, H29-31, S15-18
Must be held for Volunteer Fire Warden positions	H1, H38, R15, R16, EE15



Stage

Full Performance Stage Dimensions

10500_{mm}

Width

8000_{mm}

Depth

Stage Floor Type

***Black painted
structural plywood***

11860_{mm}

Proscenium Arch Width

5800_{mm}

Proscenium Height

Backstage Area

***Loading Dock/
Rear crossover***

Items available on request

15 x 1800mmx1200mm

Steel Deck Risers

2 x 600mm high

Threads

200mm high x various lengths

Box Infills

for choir setups

200, 400, 600, 800mm high

Steel Riser Legs

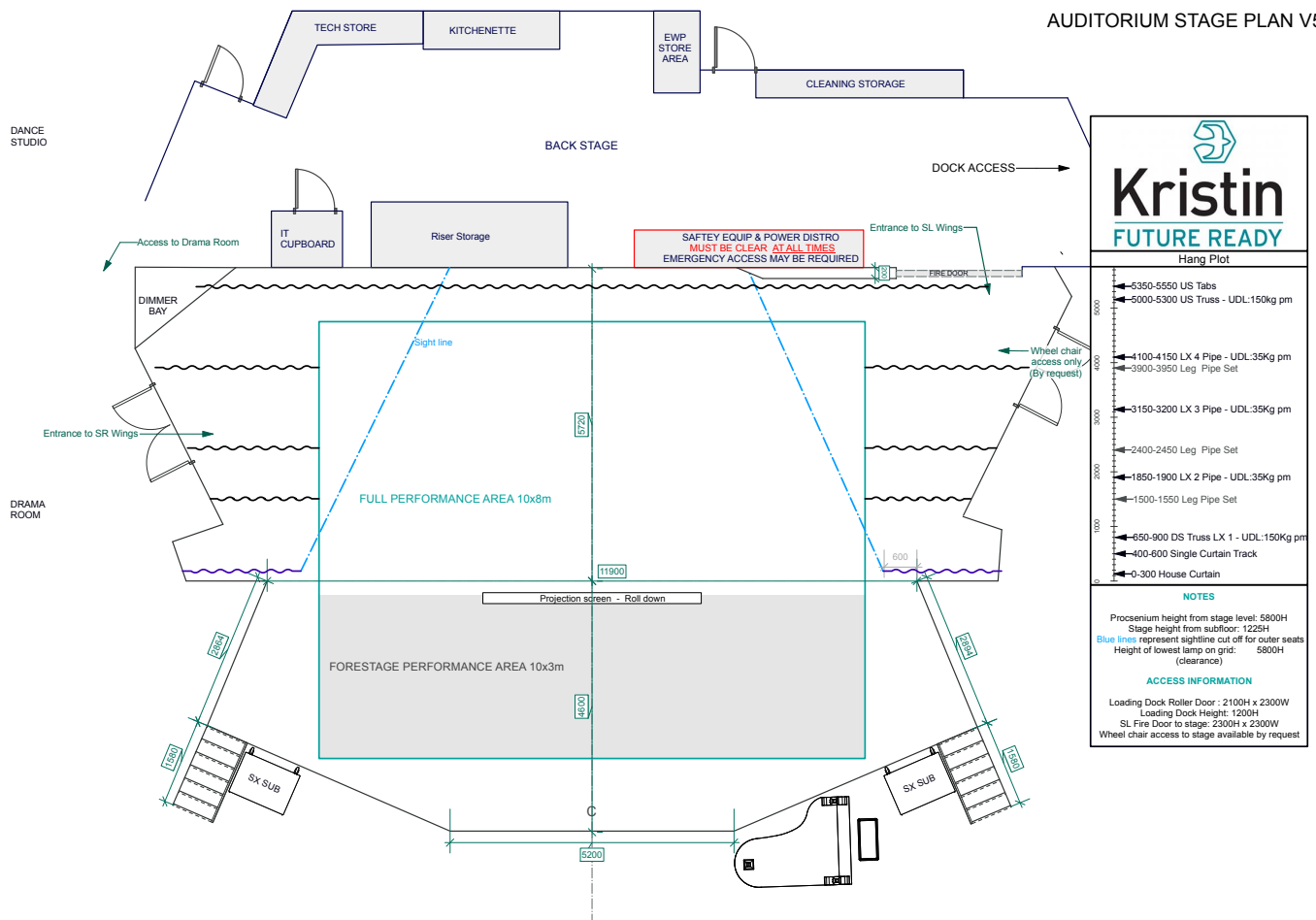
200mm and 400mm

Flat Skirts

Masking

- Rear tabs covering the back wall
- Back wall is painted white to be used as a cyclorama
- 3 x sets of legs
- Gauze available – can be rigged behind the house curtain or midstage





Other

Grand piano

Yamaha C7

situated in the pit at ground seating level (able to be rolled out of theatre)

Lectern

with lectern mics and video foldback included in stage hire if needed

Air conditioning

to full space



Lighting

Lighting Control System	Network patch points to all lighting positions 2 x CAT6A points from Dimmers/Power to Control
Plans and show files	Available on request
Console	ETC ION XE 20
Power	8x 3ph power outlets available 3 x Theatrelight DB Packs
Dimmers	5x dimmer packs (4x in use for std rig)
Lighting Grid Overstage	300mm Black box truss hanging on 4x 1T chain hoists (must stay in position) 4x LX bars on this truss
Lighting truss FOH	12m 300mm White box truss hanging on 2x 1/2T chain hoists capable of 300kg spread load 50kg point loads (must stay in position)
Followspot positions	Available at rear of Balcony
House lights	House lights are independent from LX control, various settings available

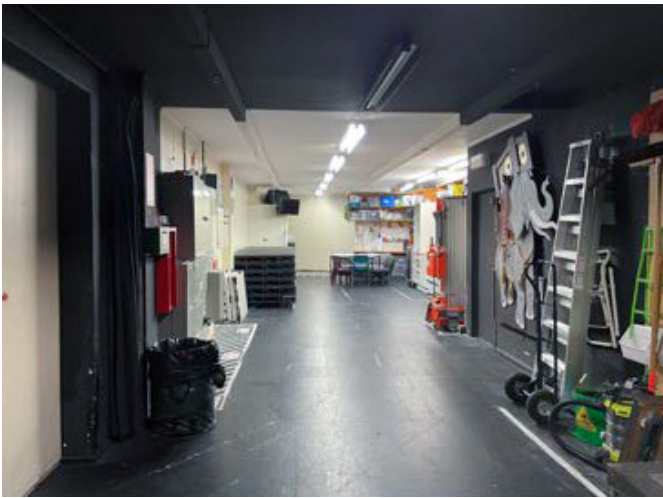
Audio

Main Left & Right Speaker Cluster(s)	4x Martin Audio T1215 4x Martin Audio T1230 2x Martin Audio TGRID fly
Centre Speaker Cluster	8x Martin Audio W8LM <i>The centre cluster is a temporary fixture and will be flown as and when required by the school/hirer utilising house motors.</i>
Subwoofer(s)	4x Martin Audio SX218 Subwoofers Ground Stacked L & R
Front fill Speakers	6x Martin Audio CDD6
Delay Speakers (under balcony)	6x Martin Audio CDD6
Onstage Monitors	2x 10" Martin Audio downstage 2x 15" Martin Audio side fill 1x Martin Audio 4ch amplifier
Console	Digico S31 main Digico D-rack 32/16 Digico DMI 8 Card
RF Microphones	2x Shure U4d 2x Sennheiser SKN500G4
Available on request (POA)	
RF Microphones	5x Shure SM58 6x Oktava MK-012-01 2x Sennheiser e606 2 x Audix M1250B 2x Audix i5 1x Audix D6 1x Audix D4 2x Sennheiser SKN500G4 (RF) 2 x Audix SCX25A (piano)
Microphone stands	6x tall straight stands 10x tall stands 7x short stands
Monitors	2x 10" DB Opera Active 2 x10" Turbosound IQ10 Active
Comms	2 channel Clear Comms receiver 4 x radio comms packs and headsets Separate comms loop to the Livestream office <i>Comms available at ops, backstage, onstage right and left, followspot room, downstage.</i>



Audio Visual

Projection System	Epson L1100 6K laser projector Long throw lens
Screen size	4m wide placement is in front of the house curtain
Screen aspect ratio	16:9
Camera	PTZ Canon CR-N500 used for backstage feed and recording and live streaming
Video distribution system	Just Add Power video distribution system with ability to plug in devices at the lectern and at sound ops area



Facilities

Dressing Rooms

- Adjacent Drama room can be used as a dressing room on request
- Sports changing rooms connected to stage can be booked on request

Green Room

- Greenroom is the rear crossover for the mainstage
- 2x screens for stage feed
- Contains storage of risers and EWP

- Amenities: Small kitchen
- Cleaning supplies
- Loading dock with truck access – 1250mmH from ground level



Foyer and Public Areas

- PA with bluetooth for playback
- 1x radio mic
- Kitchen available with servery available by request
- Box Office desk
- Mens and womens bathrooms

Fire Wardens

All external hirers are required to supply volunteer fire wardens based on the expected number of people attending their event. The Kristin Chief Fire Warden will brief the volunteers on arrival of their responsibilities during the hire period.

Accessibility

Wheelchair access

2x mobility parks

outside the theatre

Wheelchair access to stage on request

4x wheelchair seats

with support person seats attached

